



Worth a New Look

Reliance ENT Product Brochure

Exam / Procedure Chairs



980 Full Power Procedures Chair

- Round base increases accessibility to patient
- Stylish removable cushions
- Detached footswitch controls allow for utilizing as both examination and procedure chair
- Programmable side switches
- Choice of headrests
- Low model assists ADA compliance



7000 Full Power Procedures Chair

- Detached footswitch controls allows for utilizing as both examination and procedure chair
- Fully powered base and chair top recline
- Programmable side switches
- Choice of headrests
- Low model assists ADA compliance



FX 920 Fully Powered Tilt Chair

- Patented motorized tilt function via membrane switches located on both sides of chair back or through the corded footswitch
- Efficient memory recline positioning
- Tilt design ideal for tight spaces
- Also available in manual recline
- Low model assists ADA compliance



7000 Premiere Collection Procedures Chair

- Detached full footswitch controls allows for utilizing as both examination and procedure chair
- Fully powered base and chair top recline
- Programmable side switches
- Choice of headrests
- Low model assists ADA compliance
- Two- and Three-tone upholstery options
- Only available on the 7000 and 710 models



710 Minor Procedures Chair/ Table with Pillow Headrest

- Reclines to 180 degrees for minor procedures
- Optional foldaway headrest
- Memory positioning and safety switch



6200 Examination Chair

- Power hydraulic base and an assisted manual recline
- Reclines to full flat position
- Corded footswitch controls raising and lowering of base
- Membrane switches on both sides of chair control raise/lower/auto return function
- Low model assists ADA compliance

Low Voltage ENT Treatment Cabinets

Model 310



Model 310 Narrow
in Shadow Laminate

Overall Height: 48"
Height to Work Surface: 35"
Width: 25"
Depth: 20 ⁷/₁₆"
Shipping Weight: 220 lbs.

Top Drawer:
8 ¹³/₁₆" W x 10" L x 1 ³/₄" D
Middle Drawers (2):
20 ¹/₂" W x 12 ¹/₂" L x 3" D
Bottom Drawers:
20 ¹/₂" W x 12 ¹/₂" L x 4" D

- Economical, narrow footprint, laminated treatment cabinet
- Spacious work surface
- 1200cc disposable suction container
- Two Welch Allyn instruments
- Three pieces of glassware set
- Vacuum and pressure pumps and hoses
- Black laminate top standard

Model 410



Model 410
in Natural Pear Laminate

Overall Height: 48"
Height to Work Surface: 35"
Width: 33"
Depth: 20 ⁷/₁₆"
Shipping Weight: 245 lbs.

Top Drawer:
12 ¹³/₁₆" W x 10" L x 1 ³/₄" D
Middle Drawers (2):
28 ¹/₂" W x 12 ¹/₂" L x 3" D
Bottom Drawers:
28 ¹/₂" W x 12 ¹/₂" L x 4" D

- Traditional laminated treatment cabinet – choose your own laminate color
- Easy accessibility to instruments
- 1200cc disposable suction container
- Generous drawer space
- Two Welch Allyn instruments
- Vacuum and pressure pumps and hoses
- Your choice of three pieces of glassware
- Black laminate top standard

Model 510



Model 510
in Stainless Steel

Overall Height: 48"
Height to Work Surface: 35"
Width: 33 "
Depth: 20 ⁷/₁₆"
Shipping Weight: 275 lbs.

Top Drawer:
12 ¹³/₁₆" W x 10" L x 1 ³/₄" D
Middle Drawers (2):
28 ¹/₂" W x 12 ¹/₂" L x 3" D
Bottom Drawers:
28 ¹/₂" W x 12 ¹/₂" L x 4" D

- Stainless steel treatment cabinet
- Spacious work surface
- 1200cc disposable suction container
- Two Welch Allyn instruments
- Vacuum and pressure pumps and hoses
- Your choice of three pieces of glassware
- Black laminate top standard

Model 610



Model 610 Tall
in North Sea Laminate

Overall Height: 54"
Height to Work Surface: 41"
Width: 33"
Depth: 20 ⁷/₁₆"
Shipping Weight: 300 lbs.

Top Drawer:
12 ¹³/₁₆" W x 10" L x 1 ³/₄" D
Middle Drawers (2):
28 ¹/₂" W x 12 ¹/₂" L x 3" D
Bottom Drawers:
28 ¹/₂" W x 12 ¹/₂" L x 4" D
Extra Drawer:
28 ¹/₂" W x 12 ¹/₂" L x 4" D

- Tall traditional treatment cabinet with extensive storage
- Easy accessibility to instruments
- Generous drawer space
- 1200cc disposable suction container
- Two Welch Allyn instruments
- Vacuum and pressure pumps and hoses
- Your choice of three pieces of glassware
- Black laminate top standard

STOOLS AND ENT LIGHT

Examination & Surgical Stools

4200 Series Stools

Reliance's Economy Stools feature:

- Five legs to distribute weight evenly and ensure stability
- Height adjusts by pneumatic raising and lowering with lever
- 23" diameter base



4240
basic

4246
with backrest

5300 Pneumatic Stools

Reliance's top-of-the-line Pneumatic Examination Stools feature:

- Deep polyfoam seat offers support and comfort during lengthy procedures
- Five legs to distribute weight evenly and ensure stability
- 5300 Series height adjusts by using the control ring located under the seat
- Upholstered three-way, wrap-around arm for abdominal, back or arm support (5356 only)



5340
basic

5346
with backrest

5348
waterfall cushion

5356
wrap-around arm

500 Hydraulic Stools

Reliance's Hydraulic Surgical Stools Feature:

- Hydraulic raising and lowering foot pedal
- Deep polyfoam seat offers support and comfort during lengthy procedures
- Five legs to distribute weight evenly and ensure stability
- Floor lock standard on model 558, optional on all other hydraulic stools



540
basic

546
round seat
with backrest

548
waterfall cushion



556
wrap-around arm

558
individual arm rests

ENT Light

Halogen Examination Light

- Chair mounted examination light attaches to Reliance models 980, 710, 7000 and 6200
- Features a 30" swivel head gooseneck
- Light on/off switch is located on head of the examination light
- 20 watt, high intensity lamp





980

Premium Full-Power Exam/Procedure Chair

Tradition and Innovation – Since 1898, visionary thinking and a fascination with technology have guided us to develop innovative products of outstanding reliability: Anticipating trends to improve the quality of life.



980

Premium Full-Power Exam/ Procedure Chair

Ergonomic Features

- Memory programming cuts wasted movement.
- Dual side controls eliminate the need to reach over a patient to access switches.
- Rotation locks allow you to swivel chair 330° from both sides.
- Armrests lock in place and release for easy patient access and security.
- Auto return button returns chair to upright and lowered position.
- Large hinged footrest supports patient's full weight for safe ingress and egress.
- Detached footswitch allows for hands-free patient positioning.
- Headrest adjusts with a single hand and locks into place. Pillow and alternating headrests also available.



Powered Hydraulic Base and Reclining Top

- Keep contact with patient with finger switches and a corded footswitch that raises, lowers or reclines the chair and auto return.

Long-Lasting Membrane Switches

- Backlit membrane switches, which last 10-times longer than conventional switches, contribute to the 980's durability. Eliminate need for high voltage wiring.
- The programmable safety function prevents children from operating chair.
- The memory programmable function automatically positions chair to preferred exam position.

Materials, Finishes and Upholstery

- Long lasting hand-sewn upholstery with high-density foam lasts for years.
- Removable cushions for easy cleaning or replacement.
- Selection of 14 standard colors and dozens of custom selections.
- Base available in #20 Pearl.
- Cast iron bases and hinges improve stability and durability.
- Call Reliance at 1-800-735-0357 for a color card.

The Mark of Quality

- The Model 980 has passed rigorous Laboratories testing, which assures quality and safety for you and your patients, achieving CSA, C/US certificate of compliance.

Tech Specs

- Diameter: 24 1/4", Depth of chair (without headrest) table position: 60", Seat: 18 3/4" wide, 18 1/4" deep. Two base heights. HIGH: 23 5/8" lowered, 34 1/4" raised. LOW 21 1/8" lowered, 29 5/8" raised. Distance between armrests: 19" Shipping Weight: 325 lbs. Standard electric: 120 volts, 50/60 Hz, 6.3 amperes total. Optional electric: 230 volts, 50 Hz, 4.0 amperes.

800-735-0357
haag-streit-usa.com

4/16 Made in USA

 **RELIANCE**
INTERNATIONAL



7000

Dual-Purpose Exam Chair and Minor Procedure Table

Tradition and Innovation – Since 1898, visionary thinking and a fascination with technology have guided us to develop innovative products of outstanding reliability: Anticipating trends to improve the quality of life.

 **RELIANCE
INTERNATIONAL**

7000

Dual-Purpose Exam Chair and Minor Procedure Table



Ergonomic Features

Dual-side operation allows you to control chair from both sides while maintaining patient contact.

Adjustable concave headrest provides superior head and neck support, and locks with a single hand.

Upholstered armrests lock in place and release on both chair sides for security and comfort.

Large hinged footrest supports patient's full weight and tilts out of the way to save space.

Corded footswitch provides hands-free operation of chair base and top. Dual rotation locks allow you to swivel chair 330°.

Perfect for Minor Features

The 7000 chair reclines nearly flat for minor procedures. Non-articulating pillow headrest and articulating surgical headrest are optional.

Power Hydraulic base

Square pedestal base provides crucial patient stability and superior accessibility. Finger switches and a corded footswitch raise, lower or recline chair into any position without breaking patient contact. High and low base models available.

Ultra-Durable Membrane Switches

Programmable backlit membrane switches last 10-times longer than their mechanical counterparts. They're also safer because they run at low voltages.

Finishes and Upholstery

- Hand-sewn upholstery covers high-density foam that lasts for years.
- Removable cushions for easy cleaning or replacement.
- Designer-style cushions standard.
- Base available in #20 Pearl.
- Choose from 14 standard vinyl colors and endless custom selections – call Reliance at 1-800-735-0357 for a color card.

CSA Mark of Quality

The 7000 has passed all rigorous testing by CSA certification to assure its safety and durability, achieving CSA, C/US certificate of compliance.

Dimensions and Specifications

Base: 22 $\frac{5}{16}$ " x 24 $\frac{1}{2}$ ". Overall width: 24 $\frac{1}{2}$ ". Overall depth (excluding headrest): 36". Table position: 60". Seat: 19" wide by 18 $\frac{1}{2}$ " deep. Armrest distance: 19". Choice of two base heights. High: 22 $\frac{3}{4}$ " lowered, 33 $\frac{3}{8}$ " raised. Low: 20 $\frac{1}{4}$ " lowered, 28 $\frac{3}{4}$ " raised. Shipping weight: 325 lbs. Standard electrical: 115 volts, 60/50 Hz, 6.3 amperes total. Optional: 230 volts, 50 Hz, 4.0 amperes.



6200

Manual Pneumatic Recline with Power Hydraulic Base Examination Chair

Tradition and Innovation – Since 1898, visionary thinking and a fascination with technology have guided us to develop innovative products of outstanding reliability: Anticipating trends to improve the quality of life.

 **RELIANCE
INTERNATIONAL**

6200

Manual Pneumatic Recline with Power Hydraulic Base Examination Chair

Ergonomic Features

Reliance chairs are engineered for efficiency and your comfort.

Small footprint allows for increased patient access.

Powered hydraulic base with counterbalanced manual recline.

Dual side controls eliminate the need to reach over a patient to access instrumentation.

Rotation locks allow you to swivel chair 330 degrees from both sides.

Armrests lock in place and release for easy patient access and security.

Headrest adjusts with a single hand and locks into place. Pillow and alternate headrests also available.

Large hinged footrest supports patient's full weight for safe ingress and egress.

Detached footswitch permits hands-free operation of chair base function.

Recline from either side of chair.



Long-Lasting Membrane Features

Backlit membrane switches, which last 10-times longer than conventional switches eliminate need for high voltage wiring.

- **Base** raise and lower functions.
- **Auto return switch** brings chair back to lowered position.

Materials, Finishes, Upholstery

- Long lasting hand-sewn upholstery with high-density foam lasts for years.
- Removable cushions for easy cleaning, or replacement.
- Base available in #20 Pearl.
- 14 standard colors and unlimited custom selections. Visit www.Reliance-Medical.com to review selections.
- Call Reliance at 1-800-735-0357 for a color card.

The Mark of Quality

The Model 6200 has passed rigorous laboratory testing, which assures quality and safety for you and your patients, achieving CSA, C/US certificate of compliance.

Dimensions and Specifications

Choice of two base heights: High: 21¼" to 33". Low: 19¾" 28¼". Base 22 5/16 x 24½. Depth: Upright (without headrest): 40". Table: 60". Seat: 19" (wide) x 18". Armrest span: 19". Shipping weight: 355 lbs. Electrical: 60/50 Hz, 6.3 amperes. Optional electric: 230 volts, 50 Hz, 4.0 amperes achieving CSA, C/US certificate of compliance.

800-735-0357
haag-streit-usa.com

4/16 Made in USA

 **RELIANCE**
INTERNATIONAL



710

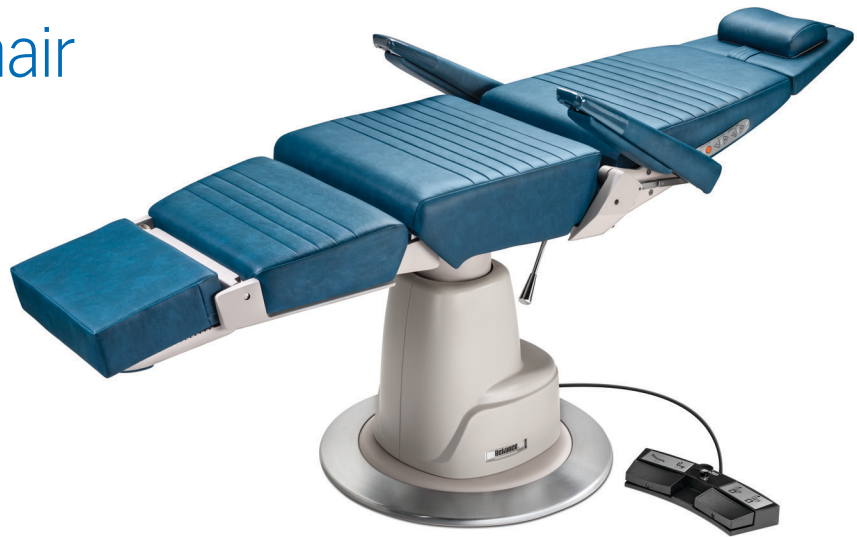
Exam Chair Doubles as a Minor Procedure Table

Tradition and Innovation – Since 1898, visionary thinking and a fascination with technology have guided us to develop innovative products of outstanding reliability: Anticipating trends to improve the quality of life.



710

Exam/Procedure Chair



Ergonomic Features

- Round base optimizes access to patient.
- Memory programming lets you pre-select the chair's most-used position.
- Dual-rotation locks allow chair to swivel 330° from both sides of the chair.
- Large hinged footrest safely supports patient's full weight.
- Padded armrests lock in place and release with a single hand.
- Comfort construction reduces patient stress and shortens procedure times.
- Detached footswitch allows for hands-free control of all chair movements.

Pillow Headrest

- Standard non-articulating pillow headrest. Optional articulating version features a sliding, removable magnetic pad and fold-away design for otology – exclusive to the 710 chair.

Power Base and Articulating Top

- Finger switches and a corded footswitch raise, lower or recline chair up to 180° without interrupting the exam. An auto-return button returns patient to the low, upright position.

Ultra-Durable Membrane Switches

- Backlit membrane switches last 10-times longer than mechanical units and run at low voltages. A programmable safety function prevents unwanted operation of the chair.

Finishes and Upholstery

- Hand-sewn upholstery covers high-density foam that lasts for years.
- Removable cushions for easy cleaning or replacement.
- Base available in #20 Pearl.
- Choose from 14 standard vinyl colors and endless custom selections – call Reliance at 1-800-735-0357 or visit my color studio for a color card.

CSA Mark of Quality

- The 710 has achieved the CSA, C/US certificate of compliance to assure safety and durability.

Tech Specs

- Base: 24 1/4" diameter. Depth in chair position (excluding headrest): 37". Table position: 64". Seat: 19" wide by 18" deep. Distance between armrests: 19". Two base heights. High: 24 5/8" lowered, 35 1/4" raised. Low: 22 1/8" lowered, 30 5/8" raised. Shipping weight: 325 lbs. Electrical: 115 volts, 60/50 Hz, 6.3 amperes. Optional electric: 230 volts, 50 Hz, 4.0 amperes.

800-735-0357
haag-streit-usa.com

4/16 Made in USA

 **RELIANCE**
INTERNATIONAL



FX-920

The World's First Full-Power Tilt Exam Chair

Tradition and Innovation – Since 1898, visionary thinking and a fascination with technology have guided us to develop innovative products of outstanding reliability: Anticipating trends to improve the quality of life.



FX-920

Patented Full-Power Tilt Exam Chair

Ergonomic Features

Memory programming cuts wasted movement and improves efficiency.

Dual-side operation controls improve access to patient.

Adjustable headrest and armrests lock with a single hand.

Power tilt eliminates physical recline motion.

Dual-rotation locks allow you to swivel chair 350° without moving.

Large hinged footrest safely supports patient's full weight.

Detached footswitch allows for hands-free patient positioning.



Power Hydraulic Base and Reclining Top

Finger switches and a corded footswitch raise, lower or tilt chair into position without breaking patient contact, or jolting them.

Auto-return button returns patient upright.

Ultra-Durable Membrane Switches

Backlit membrane switches last 10-times longer than their mechanical counterparts. They're also safer because they run at low voltages.

A programmable safety function prevents unwanted operation of the chair.

Finishes and Upholstery

- Hand-sewn upholstery covers high-density foam that lasts for years.
- Removable cushions for easy cleaning or replacement.
- Base available in #20 Pearl.
- Choose from 14 standard vinyl colors and endless custom selections – call Reliance at 1-800-735-0357 for a color card.
- All materials are fire retardant.

The Mark of Quality

The FX-920 has passed all rigorous Laboratories tests, affirming its safety and durability, achieving CSA, C/US certificate of compliance.

Tech Specs

Base: 22 5/16", width 24 1/2". Two base heights. High: 24 3/4" lowered and 35 3/8" raised. Low: 22 1/4" lowered and 30 3/4" raised. Depth upright (excluding headrest): 41"; Reclined: 57". Seat: 20" wide by 15" deep. Distance between armrests: 19 1/2". Shipping weight: 370lbs. Standard electrical: 110 volts, 60/50 Hz, 6.3 amperes. Optional electrical: 230 volts, 50 Hz, 4.0 amperes.

INDUSTRIAL

PART OF THE PREMIERE COLLECTION.



MIDNIGHT
Black | Grey

AVAILABLE COLORS

Adding fashion to form and function, chairs within our Industrial theme are dominated by cool grey tones punctuated with rich blacks for maximum impact, and softened by warm accents. The line is designed to complement a modern warehouse aesthetic that showcases raw yet refined metal, wood and concrete textures.

CONCRETE | COOL GREYS | MECHANIZED | WARM ACCENTS | URBAN | DEEP BLACKS | METAL | RECLAIMED WOOD



MECHANIZED



INDUSTRIAL



GREY TONES



TRIBECA

Black | Regimental Blue



QUARRY

Lite Grey | Grey | Slate



WAREHOUSE

Slate | Black



MIDNIGHT

Black | Slate

THE PREMIERE COLLECTION

HS RELIANCE
INTERNATIONAL

WOODLAND

PART OF THE PREMIERE COLLECTION.



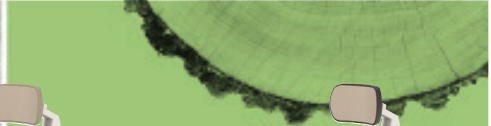
AFTERNOON COFFEE

Oatmeal | Taupe | Mocha

AVAILABLE COLORS

Nature has an instantly calming effect, and its grace and artistry serve as the inspiration for chairs within our Woodland theme. Warm browns and sandy neutrals accented with the bold hues of a sunset sky integrate beautifully with organic interior design schemes characterized by wood grains, natural textures, plenty of plants and ample soft lighting.

NATURAL | WARM | COOL | WOOD GRAINS | DIFFUSED LIGHTING | STONE | SAND | CALM | CHROMA ACCENTS



OASIS
Bucksuede | Concrete | Sand

SIERRA
Taupe | Oatmeal

DRIFTWOOD
Oatmeal | Concrete | Bucksuede

AFTERNOON COFFEE
Oatmeal | Taupe | Mocha

HS RELIANCE
INTERNATIONAL

LUCENT

PART OF THE PREMIERE COLLECTION.



COOL BREEZE
Grey | Lite Grey

AVAILABLE COLORS
▼

Light lifts moods - and sales. The warm and cool greys, soft naturals, and bold, modern hues of our Lucent line add freshness and vibrancy to breezy, light-suffused spaces, welcoming patients into an oasis of refined glamour and calm.

RADIANT | AIRY | WARM AND COOL GREYS | LUMINOUS | VIVID CHROMA ACCENTS | LUCITE | CLEAN LINES



*RADIANT
& BRIGHT*

LUCENT



COOL BREEZE
Grey | Lite Grey



BEACHCOMBER
Sand | Plum Smoke | Grey



DAY SPA
Slate | Lite Grey | Oatmeal



DAYDREAM
Oatmeal | Lite Grey | Grey

HS RELIANCE
INTERNATIONAL

HARMONY

PART OF THE PREMIERE COLLECTION.



BROWNSTONE
Terra Cotta | Otter

AVAILABLE COLORS



Invite patients in with timeless, casual sophistication. Our Harmony theme features dominant rich tones of chocolates and deep blue, accented with cool hues of taupe, grey and black – the perfect palette for a warm, welcoming interior highlighted by dim lighting, and textural elements like dark woods and natural stone contrasted with soft fabrics.

RELAXED | INVITING | DEEP CHOCOLATES | RICH BLUE | LOW LIGHT | WARM COLORS | COOL ACCENTS



BROWNSTONE
Terra Cotta | Otter



TIMBER GLEN
Concrete | Taupe | Mocha



PACIFIC COAST
Imperial Blue | Taupe



DAKOTA
Mocha | Taupe

COLOR SELECTIONS & THEMES

STANDARD COLOR & FABRIC OPTIONS

The Premiere Collection includes two stock color schemes – Midnight and Timber Glen – which are available with shorter lead times.

PRESELECTED THEMES

Our designers have studied the latest practice design trends to bring you forward-thinking color combinations. You can choose from pre-selected two- and three-tone options with standard lead times. Our Swatch Book includes the entire range of color selections within each theme.

CREATE YOUR OWN

You can also create your own custom two- or three-tone combination by choosing from all swatches in the Swatch Book, or contact Reliance for alternative fabric and colors. Additional charges and added lead times may apply.

If choosing a preselected option, indicate the combination name. If choosing your own colors, indicate one-, two- or three-color combination and your color selection for the cushion sides, center, and bolsters.

FIND OUT MORE AT
www.BuiltToSupport.com/Premiere





5300 Series Pneumatic Stools

Tradition and Innovation – Since 1858, visionary thinking and a fascination with technology have guided us to develop innovative products of outstanding reliability: Anticipating trends to improve the quality of life.



5300 Series Pneumatic Stools

Exceptional Stability

Finish and Upholstery

- Select from 14 easy-to-maintain vinyl colors. Other vinyl colors available by request.
- All exposed metal, with exception of the aluminum base, is chrome-plated steel.
- Rugged 2½" hard rubber casters.

Easily Adjustable Height Mechanism

Lift the control ring located under the seat. The stool's pneumatic device will help lift the seat as you ease your weight off the stool. Vertical travel is 6.25". Seat height ranges from 18.50" to 24.75". Footrest ring available as an option.

Tech Specs

Base diameter 19¾". Removable footrest: 16" diameter.



	5340	5346	5348	5356
Seat dimensions	15" circular	15" circular	16 x 14" sloped waterfall construction supports thighs	15" circular
Seat construction	2" polyfoam	2" polyfoam	2" polyfoam	2" polyfoam
Swivel	360°	360°	360°	360°
Five legs for extra stability	Yes	Yes	Yes	Yes
Circular control ring for pneumatic lift	Yes	Yes	Yes	Yes
Upholstered 3-way, wrap around arm	No	No	No	Yes, exceptional abdominal, back or arm support
Shipping Weight	26 lbs	32 lbs	32 lbs	47 lbs



500 Series Hydraulic Surgical Stools

Tradition and Innovation – Since 1858, visionary thinking and a fascination with technology have guided us to develop innovative products of outstanding reliability: Anticipating trends to improve the quality of life.



500 Series Hydraulic Surgical Stools

500 Series Surgical Stools

The base exceeds the circumference of the stool to provide stability, even in the sit-stand position. Swivel of stool seat is locked by lifting floor pedal. A convenient foot pedal provides hands-free adjustment of stool height.

Choice of Three Heights

Standard: 17½" to 25", medium: 20½ to 28", high: 24" to 31½".

Finished for Durability

- Select from 14, easy-to-maintain vinyl colors. Other vinyl colors available by request.
- All exposed metal, with exception of the aluminum base, is chrome-plated steel.
- Base and legs finished in tough, black epoxy enamel.

Optional Foot Ring

Order a foot ring with your stool, or at a later date.

Exceptional Stability

All 500 series stools have five legs to evenly distribute weight and ensure stability.

Tech Specs

Base diameter 19¾"; footrest: 16" diameter; 2" spacer available to elevate ring 2" to 4".



	540	546	548	556
Seat adjustment	Foot Pedal	Foot Pedal	Foot Pedal	Foot Pedal
Seat	15" circular	15" circular	14 x 16" rectangular	15" circular
Backrest – tilt, horizontal and vertical adjustment	None	Yes	Yes	Yes
Wrap-around arm	No	No	No	Yes
Seat	2" polyfoam	2" polyfoam	2" polyfoam	2" polyfoam
Five legs for extra stability	Yes	Yes	Yes	Yes
Foot pedal	Yes	Yes	Yes	Yes
Floor lock	Optional	Optional	Optional	Optional
Shipping weight	47 lbs	51 lbs	57 lbs	63 lbs

800-735-0357
haag-streit-usa.com





4200 Series Pneumatic Stools

Tradition and Innovation – Since 1858, visionary thinking and a fascination with technology have guided us to develop innovative products of outstanding reliability: Anticipating trends to improve the quality of life.



4200 Series Pneumatic Stools

Finished for Durability

- Select from 14 easy-to-maintain vinyl colors. Other vinyl colors available by request.
- All exposed metal, with exception of the aluminum base, is chrome-plated steel.
- Base and legs finished in tough, black epoxy enamel.
- Hooded dual-wheel casters.
- 5 legs for stability.

Optional Foot Ring

Order a foot ring with your stool, or at a later date.

Tech Specs

Base diameter: 22.5"



	4240	4246
Seat adjustment	Pneumatic Assist	Pneumatic Assist
Seat diameter	15"	15"
Seat construction	2" polyfoam	2" polyfoam
Seat swivels	360°	360°
Five legs for extra stability	Yes	Yes
Height range	19.50-27"	19.50-27"
Shipping weight	23 lbs	26 lbs



5300 Series Pneumatic Stools

Tradition and Innovation – Since 1858, visionary thinking and a fascination with technology have guided us to develop innovative products of outstanding reliability: Anticipating trends to improve the quality of life.

 **RELIANCE
INTERNATIONAL**

5300 Series Pneumatic Stools

Exceptional Stability

Finish and Upholstery

- Select from 14 easy-to-maintain vinyl colors. Other vinyl colors available by request.
- All exposed metal, with exception of the aluminum base, is chrome-plated steel.
- Rugged 2½" hard rubber casters.

Easily Adjustable Height Mechanism

Lift the control ring located under the seat. The stool's pneumatic device will help lift the seat as you ease your weight off the stool. Vertical travel is 6.25". Seat height ranges from 18.50" to 24.75". Footrest ring available as an option.

Tech Specs

Base diameter 19¾". Removable footrest: 16" diameter.



	5340	5346	5348	5356
Seat dimensions	15" circular	15" circular	16 x 14" sloped waterfall construction supports thighs	15" circular
Seat construction	2" polyfoam	2" polyfoam	2" polyfoam	2" polyfoam
Swivel	360°	360°	360°	360°
Five legs for extra stability	Yes	Yes	Yes	Yes
Circular control ring for pneumatic lift	Yes	Yes	Yes	Yes
Upholstered 3-way, wrap around arm	No	No	No	Yes, exceptional abdominal, back or arm support
Shipping Weight	26 lbs	32 lbs	32 lbs	47 lbs



Worth a New Look

RELIANCE LOW VOLTAGE ENT TREATMENT CABINETS

ENT TREATMENT CABINETS

Model 310



Model 310 Narrow
in Shadow Laminate

Overall Height: 48"
Height to Work Surface: 35"
Width: 25"
Depth: 20 7/16"
Shipping Weight: 220 lbs.

Top Drawer:
8 13/16" W x 10" L x 1 3/4" D
Middle Drawers (2):
20 1/2" W x 12 1/2" L x 3" D
Bottom Drawers:
20 1/2" W x 12 1/2" L x 4" D

- Economical, narrow footprint, laminated treatment cabinet
- Spacious work surface
- 1200cc disposable suction container
- Two Welch Allyn instruments
- Three pieces of glassware set
- Vacuum and pressure pumps and hoses
- Black laminate top standard

Model 410



Model 410
in Natural Pear Laminate

Overall Height: 48"
Height to Work Surface: 35"
Width: 33"
Depth: 20 7/16"
Shipping Weight: 245 lbs.

Top Drawer:
12 13/16" W x 10" L x 1 3/4" D
Middle Drawers (2):
28 1/2" W x 12 1/2" L x 3" D
Bottom Drawers:
28 1/2" W x 12 1/2" L x 4" D

- Traditional laminated treatment cabinet – choose your own laminate color
- Easy accessibility to instruments
- 1200cc disposable suction container
- Generous drawer space
- Two Welch Allyn instruments
- Vacuum and pressure pumps and hoses
- Your choice of three pieces of glassware
- Black laminate top standard

Model 510



Model 510
in Stainless Steel

Overall Height: 48"
Height to Work Surface: 35"
Width: 33"
Depth: 20 7/16"
Shipping Weight: 275 lbs.

Top Drawer:
12 13/16" W x 10" L x 1 3/4" D
Middle Drawers (2):
28 1/2" W x 12 1/2" L x 3" D
Bottom Drawers:
28 1/2" W x 12 1/2" L x 4" D

- Stainless steel treatment cabinet
- Spacious work surface
- 1200cc disposable suction container
- Two Welch Allyn instruments
- Vacuum and pressure pumps and hoses
- Your choice of three pieces of glassware
- Black laminate top standard

Model 610



Model 610 Tall
in North Sea Laminate

Overall Height: 58"
Height to Work Surface: 45"
Width: 33"
Depth: 20 7/16"
Shipping Weight: 300 lbs.

Top Drawer:
12 13/16" W x 10" L x 1 3/4" D
Middle Drawers (2):
28 1/2" W x 12 1/2" L x 3" D
Bottom Drawers:
28 1/2" W x 12 1/2" L x 4" D
Extra Drawer:
28 1/2" W x 12 1/2" L x 4" D

- Tall traditional treatment cabinet with extensive storage
- Easy accessibility to instruments
- Generous drawer space
- 1200cc disposable suction container
- Two Welch Allyn instruments
- Vacuum and pressure pumps and hoses
- Your choice of three pieces of glassware
- Black laminate top standard

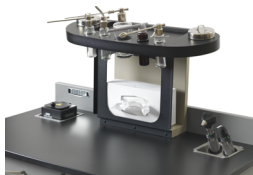
STANDARD AND OPTIONAL FEATURES

Standard components of all basic models of Reliance ENT treatment cabinets include:



Heavy duty Gas pressure & suction pumps

- Feature a 5 micron air filter and air pressure regulator that eliminates particulates



Elevated work tower

- Includes 3 pieces of glassware and 2 stainless steel canisters with lids
- Allows easy access to instruments and storage for dispensing gloves and tissues



Low voltage, backlit membrane control switches

- Meets IEC 60601-1 safety requirements
- Available in right hand or left hand configuration



Detachable power and footswitch cords

- Conveniently located in the back of the cabinet
- Recessed panel and cords save valuable floor space



Welch Allyn instruments

- Your choice of two rechargeable or corded instruments
- Can be mounted on either the left or right side of the cabinet



Full-extension drawers

- Removable inserts for easy cleaning
- Allows for versatile arrangement of instruments



Conveniently located hose clips

- Mount to either side of the cabinet providing a custom configuration for any practice



Sturdy, lockable 3-inch casters

- Allow for greater mobility
- Provide improved cabinet stability



Antimicrobial, curved drawer and door handles

- Standard for improved safety and style

Optional components of all basic models of Reliance ENT treatment cabinets include:



Three-port, LED light source

- Built-in option frees up valuable counter space
- Accepts five popular standard fittings
- Side mount only on the model 310



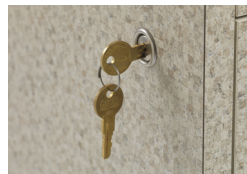
Premier bead warmer

- Can be recessed into the cabinet top
- Provides added safety and convenience



Corded, detachable footswitch

- Allow hands-free operation of suction and pressure pumps
- Can be added to any model at any time



Locking drawers

- Additional measure of safety and compliance
- Keyed and keyless entry are both available



Stainless steel debris tray and lid

- Can be mounted to the side of any cabinet model
- Tray and lid are easily removed and are autoclave safe

Add a **concealed drawer warmer** to keep mirrors fog-free. (Not pictured.)

LAMINATE AND SURFACE OPTIONS

Laminate Surface Options

Cabinet sides, backsplash, doors and drawers.



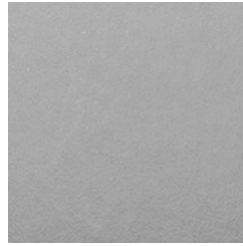
Desert Zephyr



Dove Grey



Natural Pear



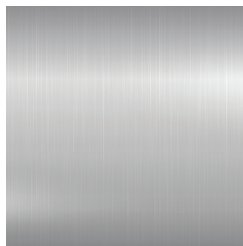
North Sea



Satin Stainless



Shadow



Stainless Steel



White Nebula

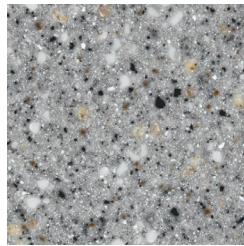
Counter Surface Options

Standard Surface



Black Laminate

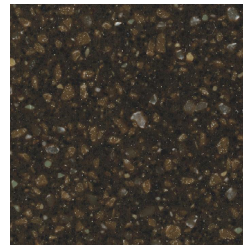
Solid Surface Options (Call for pricing)



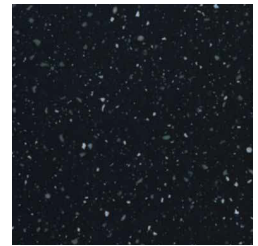
Cloudy



Hazelnut



Cocoa Vine



Eclipse

Electrical Requirements: operates at 120V/60Hz and 220-240V 50-60Hz

The cabinets conform to the following standards:

ANSI/AAMI IEC60601-1: 2005

CAN/CSA CSA-C22.2 No. 60601-1-08